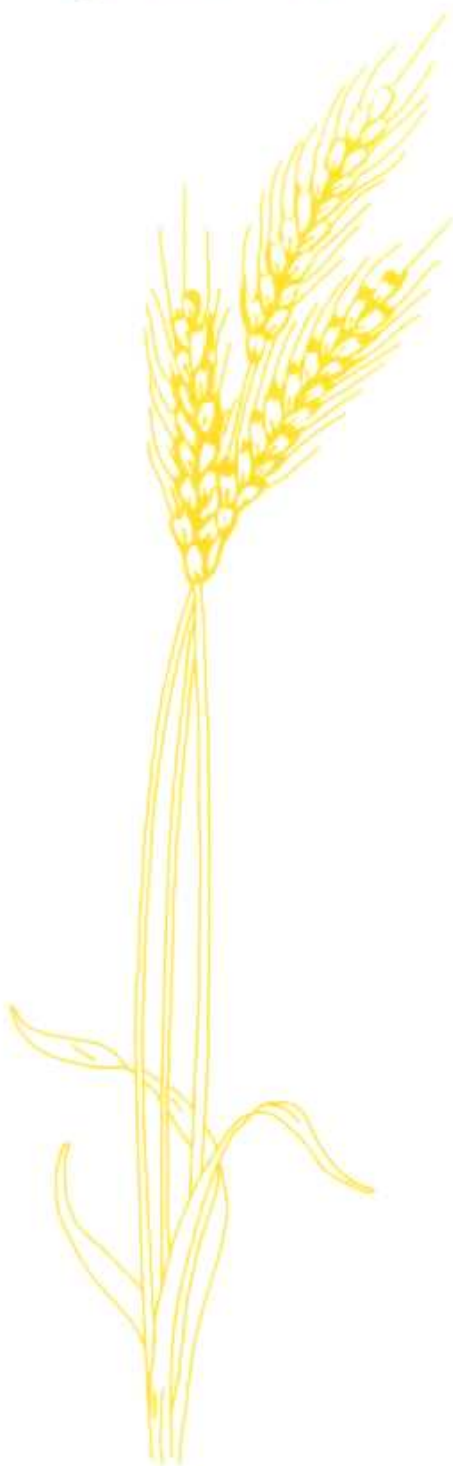


# KCI

## STANDARD SEATING FABRIC



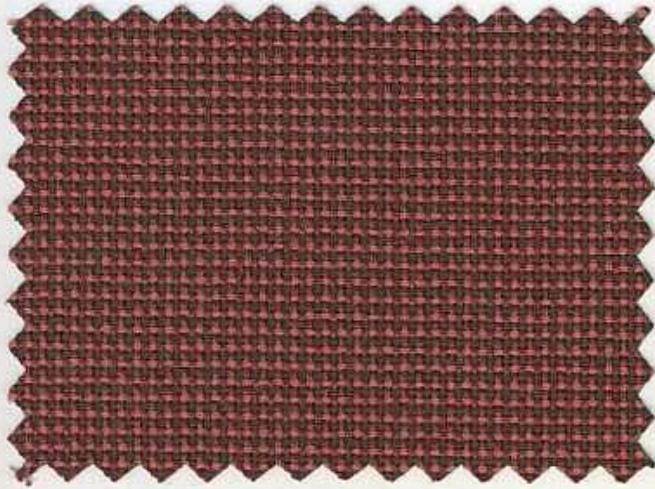
- TRIO
- OWEN
- DUET
- MANDEL

*Correctional*  
*Serving A Select Group of Customers*  
*Industries*

Post Office Box 2, Lansing KS 66043  
FAX 913-727-2331 SALES 913-727-3254

[www.kancorind.com](http://www.kancorind.com)

Trio



Geranium



Sand



Cinnamon



Fairway



Timberland



Blue Heron



Province Blue



Ink Blue



Silverplate

Owen



Cranberry



Hemp



Grey



Walnut



Garnet



Olive



Amazon



Cinder



Navy



Concord



Midnight

Mandel



Crimson



Brown



Wine



Slate



Spruce



Sand



Azure



Midnight



Onyx

Duet



Holly



Royale



Berry



Mesquite



Garnet



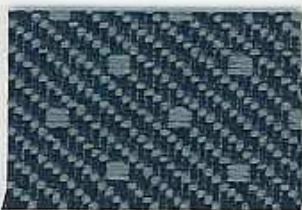
Ash



Grape



Sage



Blue



Fir



Black Forest

## SPECIFICATIONS

PATTERN 54"	FIBER CONTENT	WEIGHT LIN. YD.	PATTERN REPEAT	SURFACE ABRASION Wyzenbeek	TENSILE STRENGTH (LBS.).	LIGHT- FASTNESS	CROCKING	FLAMMABILITY	RR	CLEANING CODE
<b>DUET</b>	100% Polyolefin	9.0 oz.	N/A	60,000 Double Rubs	Warp 135 Fill 150	60 Hrs. Class 5	Wet 5 Dry 4.5	Cal 191-53 Tech Bul 117 E UFAC Class 1 BIFMA X5.7-1991 NFPA 260-1989	No	WS
<b>MANDEL</b>	100% Nylon	12.2 oz.	N/A	Exceeds 500,000 Double Rubs	Warp 160 Fill 160	60 Hrs. Class 5	Wet 4.5 Dry 4.5	Cal 191-53 Tech Bul 117 E UFAC Class 1 BIFMA Class 1	No	WS
<b>OWEN</b>	32% Polyester, 31% Olefin, 21% Nylon, 16% Acrylic	11.3 oz.	H .375" V 3.375"	30,000 Double Rubs	Warp 120 Fill 175	60 Hrs. Class 5	Wet 4.5 Dry 4.5	Cal 191-53 Tech Bul 117 E UFAC Class 1 BIFMA Class 1	No	W
<b>TRIO</b>	100% Polyolefin	8.5 oz.	N/A	60,000 Double Rubs	Warp 135 Fill 150	60 Hrs. Class 5	Wet 5 Dry 4.5	Cal 191-53 Tech Bul 117 E UFAC Class 1 BIFMA X5.7-1991 NFPA 260-1989	No	WS

# Douglass